

APPROVED
02-03-2016

BOARD OF RECREATION
AND PARK COMMISSIONERS

REPORT OF GENERAL MANAGER

NO. 16-051

DATE February 3, 2016

C.D. 15

BOARD OF RECREATION AND PARK COMMISSIONERS

SUBJECT: EXIT PARK – PARK DEVELOPMENT (PRJ20858) PROJECT – FINAL PLANS

<i>for</i> R. Barajas <u>CSD</u>	K. Regan _____
H. Fujita _____	N. Williams _____
V. Israel _____	



 General Manager

Approved _____ Disapproved _____ Withdrawn _____

RECOMMENDATIONS:

That the Board approve the final plans and specifications, substantially in the form on file in the Board Office, for the Exit Park – Park Development (PRJ20858) project.

SUMMARY:

On October 1, 2014, the Board approved the allocation of Port of Los Angeles (POLA) Funds in the amount of \$490,000 from Department No. 88 Fund No. 205, Account No. 88AM05 for Exit Park – Park Development (PRJ20858) project (Report No. 14-254). This is a 0.33 acre pocket park located at 406 North Gaffey Street in the community of San Pedro. The site is currently vacant and undeveloped and inaccessible to the general public.

RAP along with Council District 15 staff held a series of meetings to gather input for the design of the park. The meetings were held at various locations on February 9, 2015; March 10, 2015; April 3, 2015; May 7, 2015; and May 29, 2015. These meetings were attended by Council District 15 staff and various stakeholders. Stakeholders included the Central San Pedro Neighborhood Council and interested community members. The final plans and specifications were prepared by RAP staff, and represent a consensus reached among the stakeholders that accommodate the community's needs and desires. The resulting design features include paths, seating areas, a maze labyrinth, low water use trees and shrubs, smart irrigation system, and a court of flags honoring the City of Los Angeles Sister Cities.

The Exit Park site, which was acquired on October 16, 2013 by the Department of Recreation and Parks (RAP) (Report No. 13-263), was formerly a gas station owned and operated by Equilone Enterprises dba Shell Oil Products US (Shell). Per the Indemnification and Cleanup Agreement between RAP and Shell executed on November 7, 2013, Shell is required to install a system of underground dual-phase-extraction wells and piping in accordance with the 2011 Remedial Action Plan for soil and groundwater contamination at the site. Extracted contamination will be treated onsite with aboveground treatment equipment within a small securely fenced area at the edge of the park. The underground

REPORT OF GENERAL MANAGER

PG. 2 NO. 16-051

pipng for six (6) soil-vapor extraction wells and thirteen (13) dual phase wells has now been installed on the property. The well heads and the vapor treatment system will be installed in coordination with the project plans and schedule. Once the park is completed and the remediation is finished, the underground equipment will be abandoned in place and the aboveground treatment facility removed. There will be negligible risk to adults or children who use the park.

The design as presented in Exhibit A will go out to bid using the Board's approved on-call list for As Needed Park Facility Construction. It is expected that construction will take six (6) months. The estimated cost of the park construction is \$460,000.

TREES AND SHADE:

The species and quantities of trees as specified in the plans are as follows. Trees are listed by botanical name followed by the common name:

<u>Quantity</u>	<u>Tree's Name</u>
5	Acacia podalyriifolia – Pearl Acacia
11	Lyonothamnus floribundus ssp aspleniifolius – Catalina Ironwood
3	Parkinsonia 'Desert Museum' – Mexican Palo Verde
5	Platanus Mexicana – Mexican Sycamore

All of the trees specified are regionally compatible and have low water requirements. The total canopy cover amounts to 73% of the total project square footage.

ENVIRONMENTAL IMPACT STATEMENT:

Staff has determined that the subject project is a continuation of an existing project approved on October 16, 2013 (Report No. 13-263), which is exempted from CEQA [Section 3(6) of City CEQA Guidelines, and Section 15325(t) of the State CEQA Guidelines]. The work approved by the current Board action will not result in any additional environmental impacts, and is therefore covered by the existing CEQA exemption. No additional CEQA documentation is required.

Council District 15 and Pacific Region management and staff support this new park development.

FISCAL IMPACT STATEMENT:

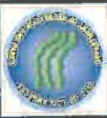
The estimated costs for the design, development, and construction of the proposed park improvements are anticipated to be funded by fund 205/88/TBD, and will have no impact on the RAP's General Fund.

Once this project is completed, RAP staff will request Sixteen Thousand, Fifty Dollars (\$16,050.00) for annual maintenance for this facility. This budget includes part-time staff, materials, and supplies required to provide maintenance year round.

REPORT OF GENERAL MANAGER

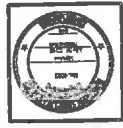
PG. 3 NO. 16-051

This Report was prepared by Craig Raines, Landscape Architectural Associate III, Planning, Construction, and Maintenance Branch.



THE CITY OF LOS ANGELES
DEPARTMENT OF RECREATION AND PARKS
GENERAL MANAGER MICHAEL SKILL
ASSISTANT GENERAL MANAGER RANDY BARRAS

DATE: _____
PROJECT NUMBER: _____
PROJECT NAME: _____

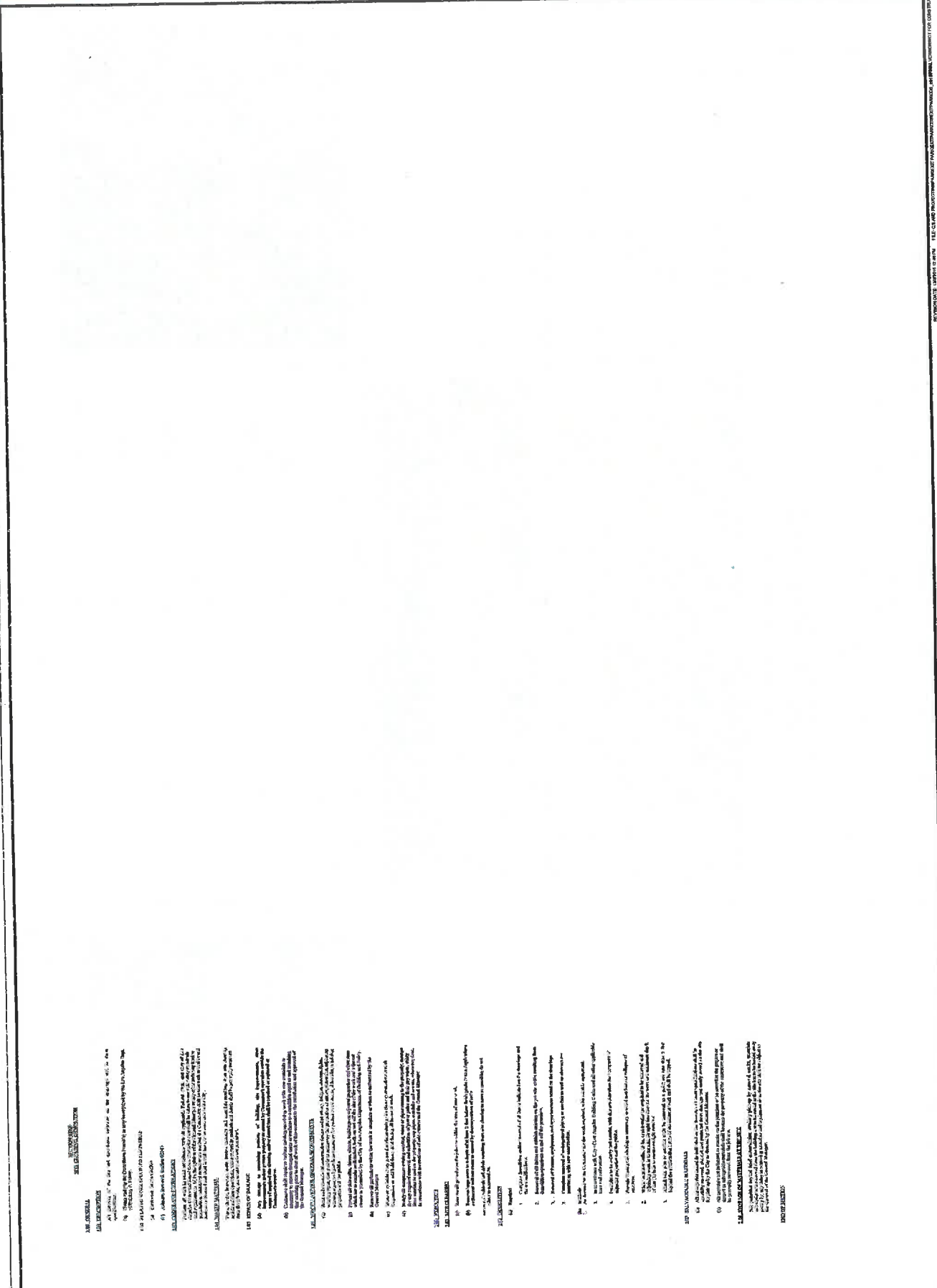


PROJECT NAME: **EXIT PARK**
ADDRESS: **406 N. GAFFEY STREET
SAN PEDRO, CA.**

DATE	_____
BY	_____
CHECKED BY	_____
APPROVED BY	_____

PLAN NUMBER: **SP-00**

CITY	LOS ANGELES
COUNTY	LOS ANGELES
PROJECT NUMBER	SP-00
DATE	1/22/2015
BY	_____
CHECKED BY	_____
APPROVED BY	_____



1.00 GENERAL NOTES

1.01 ALL WORK SHALL BE IN ACCORDANCE WITH THE STANDARD SPECIFICATIONS FOR PUBLIC WORKS, EDITION 2009, AS AMENDED BY THE CITY OF LOS ANGELES, CALIFORNIA, AND THE STANDARD SPECIFICATIONS FOR PUBLIC WORKS, EDITION 2009, AS AMENDED BY THE CITY OF LOS ANGELES, CALIFORNIA, AND THE STANDARD SPECIFICATIONS FOR PUBLIC WORKS, EDITION 2009, AS AMENDED BY THE CITY OF LOS ANGELES, CALIFORNIA.

2.00 MATERIALS

2.01 ALL MATERIALS SHALL BE OF THE BEST QUALITY AVAILABLE AND SHALL BE SUBJECT TO INSPECTION AND APPROVAL BY THE CITY ENGINEER BEFORE BEING USED IN THE WORK.

3.00 CONSTRUCTION

3.01 ALL CONSTRUCTION SHALL BE IN ACCORDANCE WITH THE STANDARD SPECIFICATIONS FOR PUBLIC WORKS, EDITION 2009, AS AMENDED BY THE CITY OF LOS ANGELES, CALIFORNIA.

4.00 UTILITIES

4.01 ALL UTILITIES SHALL BE PROTECTED AND MAINTAINED THROUGHOUT THE CONSTRUCTION OF THE PROJECT.

5.00 TRAFFIC CONTROL

5.01 ALL TRAFFIC CONTROL SHALL BE IN ACCORDANCE WITH THE STANDARD SPECIFICATIONS FOR PUBLIC WORKS, EDITION 2009, AS AMENDED BY THE CITY OF LOS ANGELES, CALIFORNIA.

6.00 ENVIRONMENTAL PROTECTION

6.01 ALL CONSTRUCTION SHALL BE IN ACCORDANCE WITH THE STANDARD SPECIFICATIONS FOR PUBLIC WORKS, EDITION 2009, AS AMENDED BY THE CITY OF LOS ANGELES, CALIFORNIA.

7.00 SIGNAGE

7.01 ALL SIGNAGE SHALL BE IN ACCORDANCE WITH THE STANDARD SPECIFICATIONS FOR PUBLIC WORKS, EDITION 2009, AS AMENDED BY THE CITY OF LOS ANGELES, CALIFORNIA.

8.00 MAINTENANCE

8.01 ALL MAINTENANCE SHALL BE IN ACCORDANCE WITH THE STANDARD SPECIFICATIONS FOR PUBLIC WORKS, EDITION 2009, AS AMENDED BY THE CITY OF LOS ANGELES, CALIFORNIA.

9.00 ASPHALT

9.01 ALL ASPHALT SHALL BE IN ACCORDANCE WITH THE STANDARD SPECIFICATIONS FOR PUBLIC WORKS, EDITION 2009, AS AMENDED BY THE CITY OF LOS ANGELES, CALIFORNIA.



PROJECT NUMBER: _____
 PROJECT NAME: _____
 GENERAL MANAGER MICHAEL SHELL
 ASSISTANT CITY MANAGER PAMON BASKIN



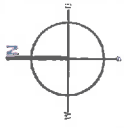
PROJECT NAME: **EXIT PARK**
 ADDRESS: **406 N. GAFFEY STREET
 SAN PEDRO, CA**

REVISIONS:	DATE:

PLAN NAME: **DEMO. PLAN**

DRAWN BY: MALM	REVISIONS: 01
CHECKED BY: MALM	DATE: 11/27/03
DATE: 11/27/03	SCALE: AS SHOWN
PROJECT NO: 2003	PROJECT NAME: EXIT PARK

LS-01



EXISTING LIGHT
TO BE REMOVED

EXISTING CHAIN LINK
FENCE TO BE USED AS
CONSTRUCTION FENCE
AND REMOVED UPON
PROJECT COMPLETION

EXISTING LIGHT
TO BE REMOVED

EXISTING LIGHT
TO BE REMOVED



THE CITY OF LOS ANGELES
DEPARTMENT OF RECREATION AND PARKS
GENERAL MANAGER MICHAEL SHULL
ASSISTANT GEN. MANAGER JAMON PARKS



PROJECT NAME: **EXIT PARK**
ADDRESS: **408 N. GAFFEY STREET**
SAN PEDRO, CA

PLAN NAME: **CONST. PLAN**
DATE: _____
PROJECT NO.: _____
DRAWN BY: _____
CHECKED BY: _____
DATE: _____

CONTACTS:

LANDSCAPE FORMS:
LARRY CASEY: (818)761-0655
SALES@CHAPPARAL-INC.COM

LOMPOC STONE:
DEBBIE DANTON - (849) 347-2161

PACIFIC FLAGPOLE SERVICE:
NICK - (858) 892-2555
SALES@PACIFICFLAGPOLESERVICES.COM

EXISTING CMU WALL TO BE PROTECTED IN PLACE

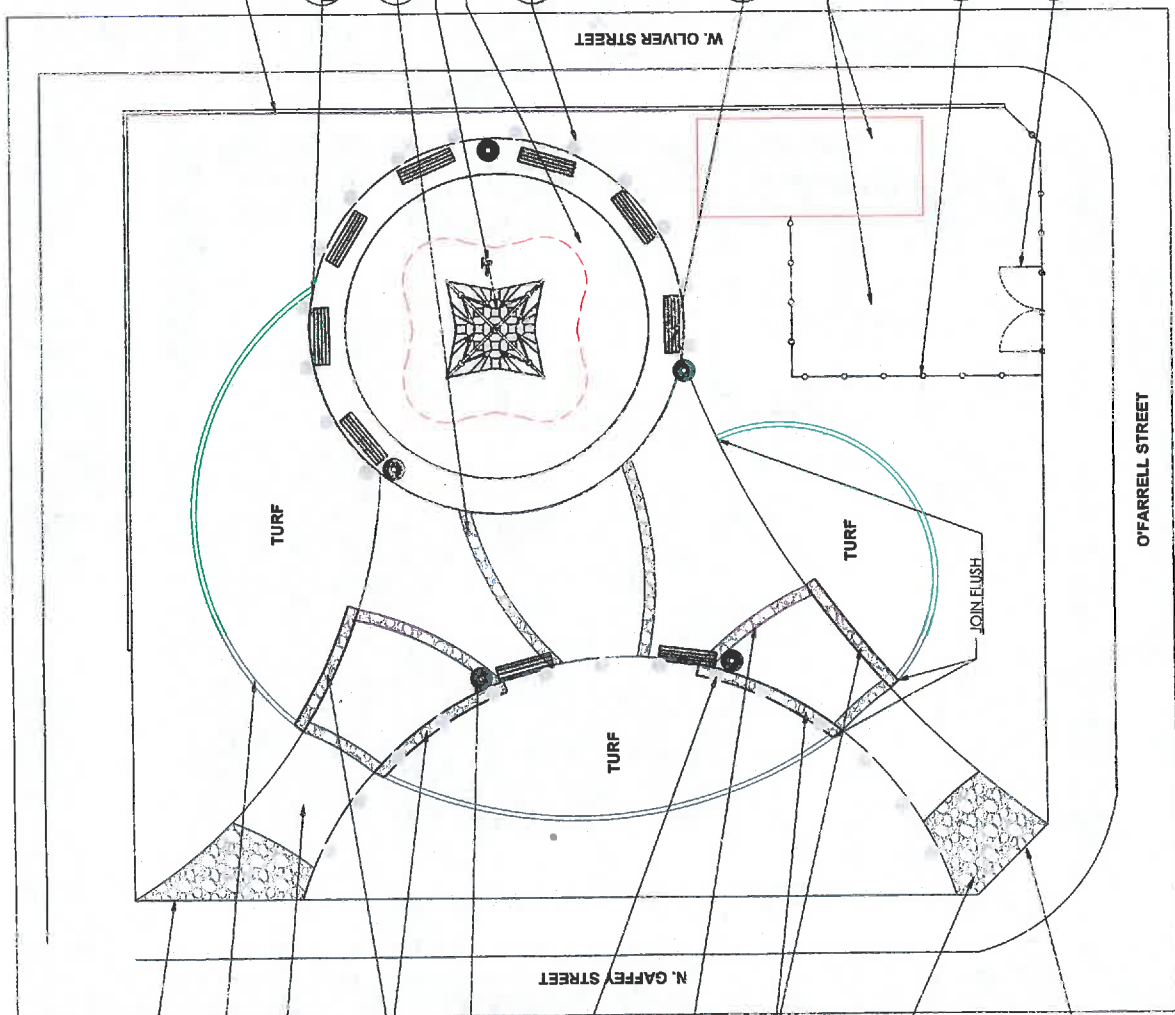
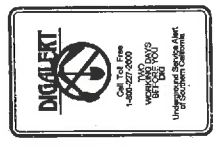
PERMALOC CLEANLINE XL ALUMINUM LANDSCAPE EDGING TO BE INSTALLED BETWEEN TURF AND LABYRINTH PLANTING

LOMPOC STONE 'COUNTRY FLAG' FLAGSTONE PAVING
LSI Play piece: 189329

Play area with resilient surfacing. Provide 5x5 sump for drainage. Standard RAP DETAIL
Sub base to be 5" thick Concrete poured in place.

25' AMERICAN FLAGPOLE
IRW25C61-02 FLAG POLE

72" LANDSCAPE FORMS 'MELVILLE' BENCH BRONZE - ML-146-03. ALL BENCHES TO HAVE CENTER RESTS AND END ARM RESTS



JOIN FLUSH WITH EXISTING PAVING

8" CONCRETE MONOSTRIP

POURED IN PLACE CONCRETE PAVING WITH DEEP SCORING. SUB-GRADE TO BE 90% RELATIVE COMPACTION

LOMPOC STONE 'COUNTRY FLAG' FLAGSTONE CLAD BERM WALL

LANDSCAPE FORMS POE SIDE OPENING RECEPTACLE .34 GALLON. STANDARD OPENING WITH LOCK. BRONZE-P0257-04

LOMPOC STONE 'COUNTRY FLAG' FLAGSTONE 25' AMERICAN FLAGPOLE IRW25C61-02 FLAG POLE

LOMPOC STONE 'COUNTRY FLAG' FLAGSTONE 18" PAVING STRIP

LOMPOC STONE 'COUNTRY FLAG' FLAGSTONE CLAD BERM WALL

LOMPOC STONE 'COUNTRY FLAG' FLAGSTONE PAVING. SUB-BASE POURED IN PLACE CONCRETE 5" THICK SET STONE OF 5" MORTAR BASE. SUB-GRADE TO BE 90% RELATIVE COMPACTION

JOIN FLUSH WITH EXISTING PAVING

NOTES:
1. LAYOUT OF ALL ELEMENTS TO BE VERIFIED WITH PROJECT LANDSCAPE ARCHITECT PRIOR TO INSTALLATION.
2. IF ANY DISCREPANCIES OCCUR WITH WHAT IS SHOWN ON THE PLAN AND WHAT IS SHOWN IN THE FIELD, CONTRACTOR SHALL NOTIFY THE PROJECT LANDSCAPE ARCHITECT.



THE CITY OF LOS ANGELES
DEPARTMENT OF RECREATION AND PARKS
GENERAL MANAGER MICHAEL SHELL
ASSISTANT GENERAL MANAGER CAROL PARKS



PROJECT NAME: EXIT PARK
ADDRESS: 406 N. GARFAY STREET
SAN PEDRO, CA

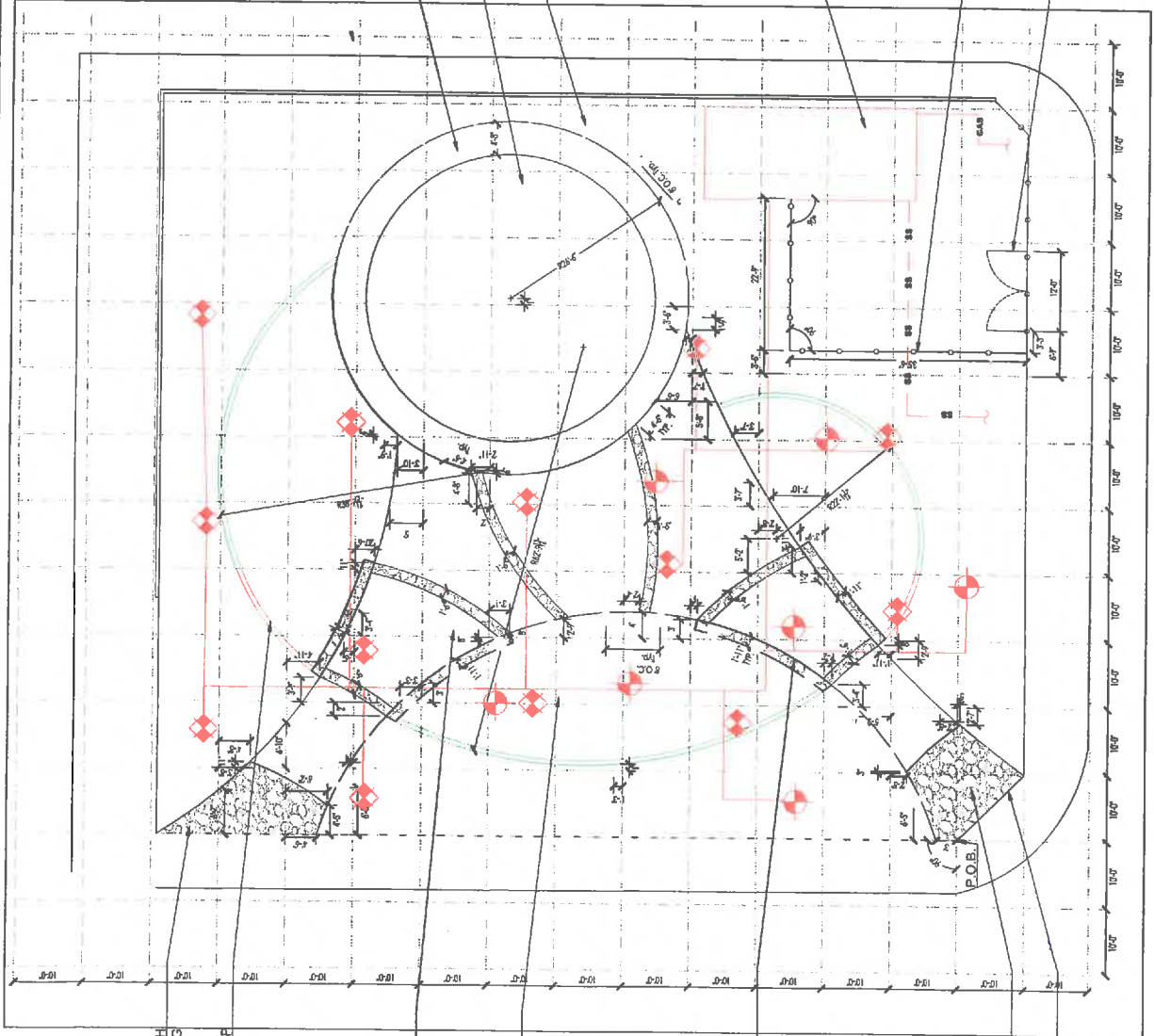
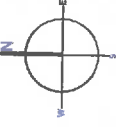
DATE	
REVISION	
DATE	
REVISION	
DATE	
REVISION	

PLAN NAME: LAYOUT PLAN
DRAWN BY: C.A.B.
CHECKED BY: C.A.B.
SCALE: AS SHOWN
DATE: 1/22/2015
PROJECT NO: 2002-2652
ISSUING NO: LS-03

SHELL OIL REMEDIATION PLAN LEGEND

- ONE EXTRACTION WELL - CONNECTED TO SYSTEM
- ONE EXTRACTION WELL - NOT CONNECTED TO SYSTEM
- OTHER WELL - NOT CONNECTED TO SYSTEM
- PROPOSED TREATMENT SYSTEM PIPING
- PROPOSED ELECTRICAL SERVICE PIPING
- PROPOSED SEWER LATERAL PIPING
- PROPOSED GAS (NATURAL) SERVICE LINE PIPING

*FOR REFERENCE ONLY. ANY CONFLICTS BETWEEN WHAT IS SHOWN ON PLAN AND WHAT OCCURS IN THE FIELD CONTACT CRAIG RAINES: (213) 202-2652



JOIN FLUSH WITH EXISTING PAVING

8" CONCRETE MOWSTRIP

POURED IN PLACE CONCRETE PAVING WITH DEEP SCORING. SUB-GRADE TO BE 90% RELATIVE COMPACTION

UC VERDE BLUEGRASS TURF BERM AREA

LOMPOC FLAGSTONE CLAD BERM WALL

LOMPOC FLAGSTONE PAVING

JOIN FLUSH WITH EXISTING PAVING

CHAIN LINK FENCE WITH SCREEN

CHAIN LINK GATE

SHELL OIL REMEDIATION PROJECT AREA

FLAG POLE

LOMPOC FLAGSTONE PAVING resilient for play area

NOTES:

- LAYOUT OF ALL ELEMENTS TO BE VERIFIED WITH PROJECT LANDSCAPE ARCHITECT PRIOR TO INSTALLATION.
- IF ANY DISCREPANCIES OCCUR WITH WHAT IS SHOWN ON THE PLAN AND WHAT IS OCCURRING IN THE FIELD, CONTRACTOR SHALL NOTIFY THE PROJECT LANDSCAPE ARCHITECT.

THE CITY OF LOS ANGELES IS NOT RESPONSIBLE FOR THE ACCURACY OR COMPLETENESS OF ELECTRONIC COPIES OF THIS PLAN SHEET.



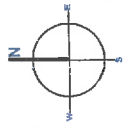
THE CITY OF LOS ANGELES
 DEPARTMENT OF RECREATION AND PARKS
 GENERAL MANAGER MICHAEL SHELL
 ASSISTANT GENERAL MANAGER JACOB BARRERA



PROJECT NAME: **EXIT PARK**
 ADDRESS: **406 N. GAFFEY STREET
 SAN PEDRO, CA**

DATE: _____
 DRAWN BY: _____
 CHECKED BY: _____
 APPROVED BY: _____

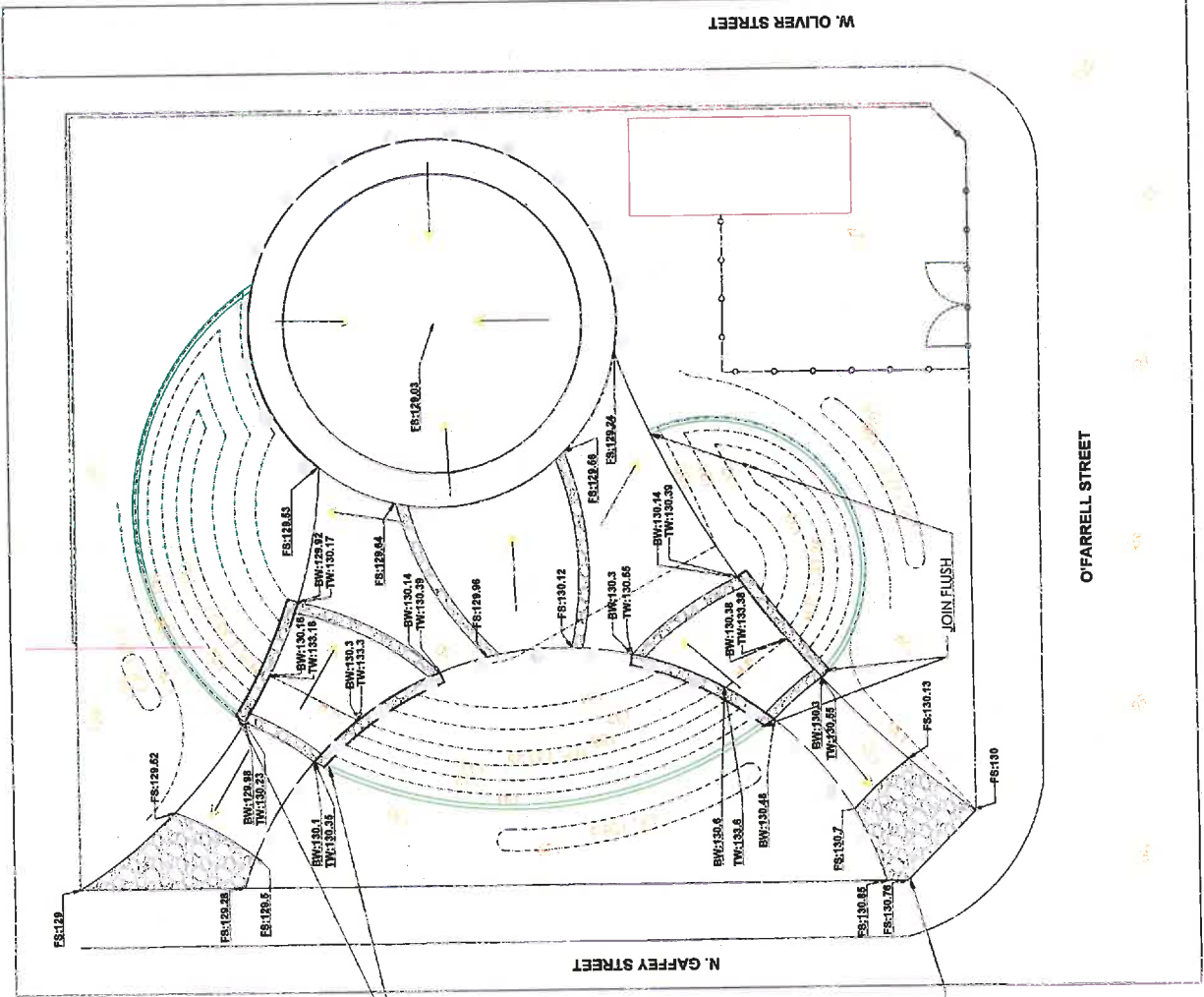
PLAN NAME:	
GRADING PLAN	
DATE:	LS-04
SCALE:	AS SHOWN
PROJECT NO.:	
DATE:	
BY:	
CHECKED BY:	
APPROVED BY:	



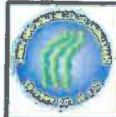
LEGEND

EXISTING CONTOUR
 PROPOSED CONTOUR
 DIRECTION OF FLOW, MIN 1%

CUT AND FILL
 TOTAL CUT: 19.5 CU YDS
 TOTAL FILL: 89 CU YDS
 TOTAL IMPORTED SOIL: 49.5 CU YDS



THE CITY OF LOS ANGELES OR ITS OFFICERS OR AGENCIES SHALL NOT BE RESPONSIBLE FOR THE ACCURACY OR COMPLETENESS OF ANY INFORMATION OR DATA SHOWN ON THIS PLAN.



THE CITY OF LOS ANGELES
DEPARTMENT OF RECREATION AND PARKS
GENERAL MANAGER MICHAEL SMITH
ASSISTANT GENERAL MANAGER MARCO MATAVALA



PROJECT NAME: EXIT PARK
ADDRESS: 406 N. GAFFEY STREET
SAN PEDRO, CA

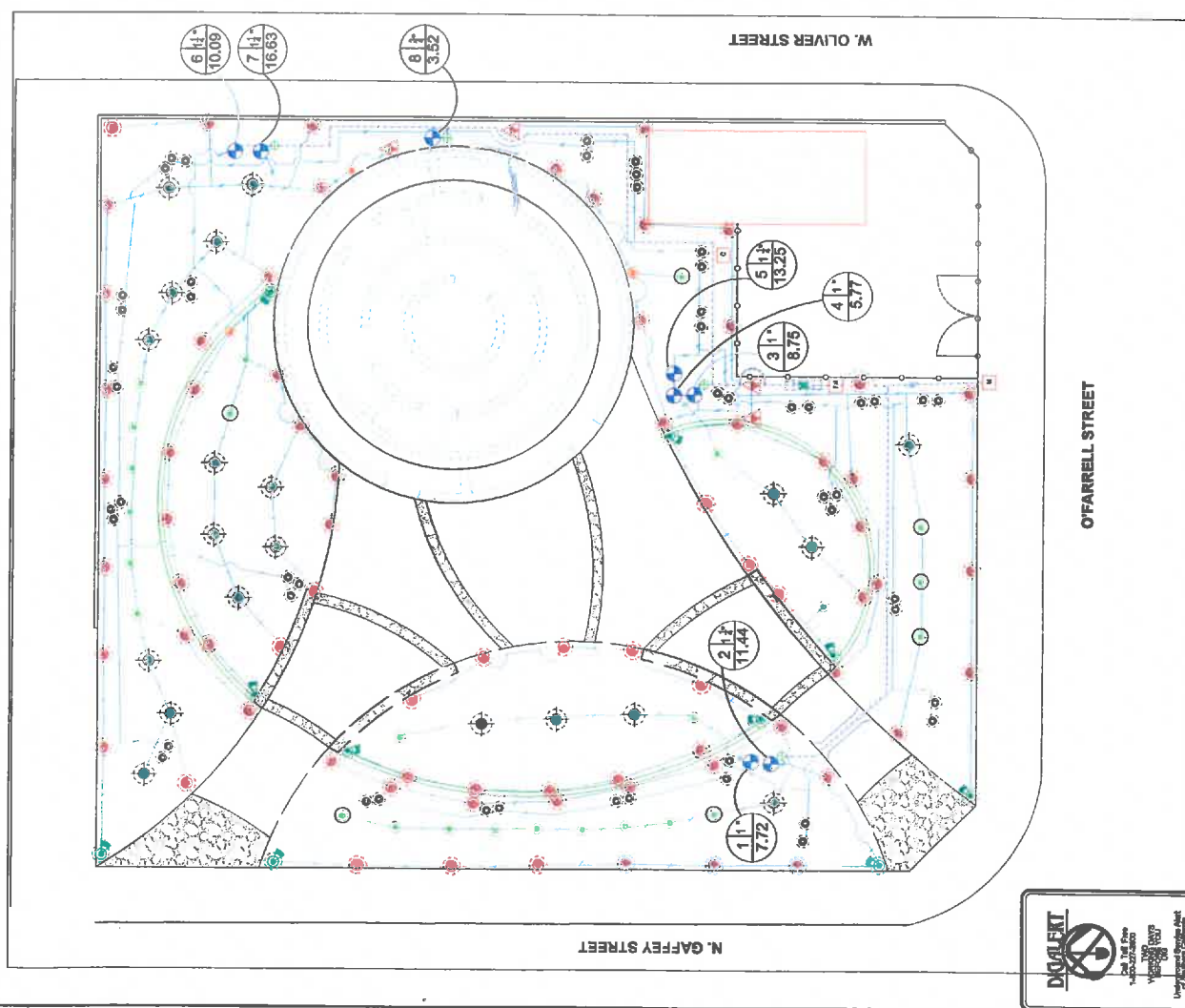
PLAN NAME: IRRIGATION PLAN
DATE: 11/22/2013
SCALE: 1" = 40'
DRAWN BY: J. M. SMITH
CHECKED BY: J. M. SMITH
PROJECT NO: LS-05

IRRIGATION LEGEND

SYMBOL	DESCRIPTION	MANUFACTURER/MODEL	VALVE SIZE	QTY.	DEGREE	P.A.I.	GRN	RMGRS	REMARKS
75	MANHOLE - 30" DIA. - 15' DEPTH	MANHOLE - 30" DIA. - 15' DEPTH	30"	40	15-30	15'			ADJUST ARC AND RADIUS AS NEEDED
20	MANHOLE - 30" DIA. - 15' DEPTH	MANHOLE - 30" DIA. - 15' DEPTH	30"	40	15-30	15'			ADJUST ARC AND RADIUS AS NEEDED
6	MANHOLE - 30" DIA. - 15' DEPTH	MANHOLE - 30" DIA. - 15' DEPTH	30"	40	15-30	15'			ADJUST ARC AND RADIUS AS NEEDED
11	MANHOLE - 30" DIA. - 15' DEPTH	MANHOLE - 30" DIA. - 15' DEPTH	30"	40	15-30	15'			ADJUST ARC AND RADIUS AS NEEDED
4	MANHOLE - 30" DIA. - 15' DEPTH	MANHOLE - 30" DIA. - 15' DEPTH	30"	40	15-30	15'			ADJUST ARC AND RADIUS AS NEEDED
3	MANHOLE - 30" DIA. - 15' DEPTH	MANHOLE - 30" DIA. - 15' DEPTH	30"	40	15-30	15'			ADJUST ARC AND RADIUS AS NEEDED
19	MANHOLE - 30" DIA. - 15' DEPTH	MANHOLE - 30" DIA. - 15' DEPTH	30"	40	15-30	15'			ADJUST ARC AND RADIUS AS NEEDED
53	MANHOLE - 30" DIA. - 15' DEPTH	MANHOLE - 30" DIA. - 15' DEPTH	30"	40	15-30	15'			ADJUST ARC AND RADIUS AS NEEDED
4	MANHOLE - 30" DIA. - 15' DEPTH	MANHOLE - 30" DIA. - 15' DEPTH	30"	40	15-30	15'			ADJUST ARC AND RADIUS AS NEEDED
7	MANHOLE - 30" DIA. - 15' DEPTH	MANHOLE - 30" DIA. - 15' DEPTH	30"	40	15-30	15'			ADJUST ARC AND RADIUS AS NEEDED
1	MANHOLE - 30" DIA. - 15' DEPTH	MANHOLE - 30" DIA. - 15' DEPTH	30"	40	15-30	15'			ADJUST ARC AND RADIUS AS NEEDED

IRRIGATION LEGEND:

SYMBOL	DESCRIPTION	MANUFACTURER/MODEL	VALVE SIZE	QTY.	DEGREE	P.A.I.	GRN	RMGRS	REMARKS
1	MANHOLE - 30" DIA. - 15' DEPTH	MANHOLE - 30" DIA. - 15' DEPTH	30"	40	15-30	15'			ADJUST ARC AND RADIUS AS NEEDED
2	MANHOLE - 30" DIA. - 15' DEPTH	MANHOLE - 30" DIA. - 15' DEPTH	30"	40	15-30	15'			ADJUST ARC AND RADIUS AS NEEDED
3	MANHOLE - 30" DIA. - 15' DEPTH	MANHOLE - 30" DIA. - 15' DEPTH	30"	40	15-30	15'			ADJUST ARC AND RADIUS AS NEEDED
4	MANHOLE - 30" DIA. - 15' DEPTH	MANHOLE - 30" DIA. - 15' DEPTH	30"	40	15-30	15'			ADJUST ARC AND RADIUS AS NEEDED
5	MANHOLE - 30" DIA. - 15' DEPTH	MANHOLE - 30" DIA. - 15' DEPTH	30"	40	15-30	15'			ADJUST ARC AND RADIUS AS NEEDED
6	MANHOLE - 30" DIA. - 15' DEPTH	MANHOLE - 30" DIA. - 15' DEPTH	30"	40	15-30	15'			ADJUST ARC AND RADIUS AS NEEDED
7	MANHOLE - 30" DIA. - 15' DEPTH	MANHOLE - 30" DIA. - 15' DEPTH	30"	40	15-30	15'			ADJUST ARC AND RADIUS AS NEEDED
8	MANHOLE - 30" DIA. - 15' DEPTH	MANHOLE - 30" DIA. - 15' DEPTH	30"	40	15-30	15'			ADJUST ARC AND RADIUS AS NEEDED
9	MANHOLE - 30" DIA. - 15' DEPTH	MANHOLE - 30" DIA. - 15' DEPTH	30"	40	15-30	15'			ADJUST ARC AND RADIUS AS NEEDED
10	MANHOLE - 30" DIA. - 15' DEPTH	MANHOLE - 30" DIA. - 15' DEPTH	30"	40	15-30	15'			ADJUST ARC AND RADIUS AS NEEDED
11	MANHOLE - 30" DIA. - 15' DEPTH	MANHOLE - 30" DIA. - 15' DEPTH	30"	40	15-30	15'			ADJUST ARC AND RADIUS AS NEEDED
12	MANHOLE - 30" DIA. - 15' DEPTH	MANHOLE - 30" DIA. - 15' DEPTH	30"	40	15-30	15'			ADJUST ARC AND RADIUS AS NEEDED
13	MANHOLE - 30" DIA. - 15' DEPTH	MANHOLE - 30" DIA. - 15' DEPTH	30"	40	15-30	15'			ADJUST ARC AND RADIUS AS NEEDED
14	MANHOLE - 30" DIA. - 15' DEPTH	MANHOLE - 30" DIA. - 15' DEPTH	30"	40	15-30	15'			ADJUST ARC AND RADIUS AS NEEDED
15	MANHOLE - 30" DIA. - 15' DEPTH	MANHOLE - 30" DIA. - 15' DEPTH	30"	40	15-30	15'			ADJUST ARC AND RADIUS AS NEEDED
16	MANHOLE - 30" DIA. - 15' DEPTH	MANHOLE - 30" DIA. - 15' DEPTH	30"	40	15-30	15'			ADJUST ARC AND RADIUS AS NEEDED
17	MANHOLE - 30" DIA. - 15' DEPTH	MANHOLE - 30" DIA. - 15' DEPTH	30"	40	15-30	15'			ADJUST ARC AND RADIUS AS NEEDED
18	MANHOLE - 30" DIA. - 15' DEPTH	MANHOLE - 30" DIA. - 15' DEPTH	30"	40	15-30	15'			ADJUST ARC AND RADIUS AS NEEDED
19	MANHOLE - 30" DIA. - 15' DEPTH	MANHOLE - 30" DIA. - 15' DEPTH	30"	40	15-30	15'			ADJUST ARC AND RADIUS AS NEEDED
20	MANHOLE - 30" DIA. - 15' DEPTH	MANHOLE - 30" DIA. - 15' DEPTH	30"	40	15-30	15'			ADJUST ARC AND RADIUS AS NEEDED
21	MANHOLE - 30" DIA. - 15' DEPTH	MANHOLE - 30" DIA. - 15' DEPTH	30"	40	15-30	15'			ADJUST ARC AND RADIUS AS NEEDED
22	MANHOLE - 30" DIA. - 15' DEPTH	MANHOLE - 30" DIA. - 15' DEPTH	30"	40	15-30	15'			ADJUST ARC AND RADIUS AS NEEDED
23	MANHOLE - 30" DIA. - 15' DEPTH	MANHOLE - 30" DIA. - 15' DEPTH	30"	40	15-30	15'			ADJUST ARC AND RADIUS AS NEEDED
24	MANHOLE - 30" DIA. - 15' DEPTH	MANHOLE - 30" DIA. - 15' DEPTH	30"	40	15-30	15'			ADJUST ARC AND RADIUS AS NEEDED
25	MANHOLE - 30" DIA. - 15' DEPTH	MANHOLE - 30" DIA. - 15' DEPTH	30"	40	15-30	15'			ADJUST ARC AND RADIUS AS NEEDED
26	MANHOLE - 30" DIA. - 15' DEPTH	MANHOLE - 30" DIA. - 15' DEPTH	30"	40	15-30	15'			ADJUST ARC AND RADIUS AS NEEDED
27	MANHOLE - 30" DIA. - 15' DEPTH	MANHOLE - 30" DIA. - 15' DEPTH	30"	40	15-30	15'			ADJUST ARC AND RADIUS AS NEEDED
28	MANHOLE - 30" DIA. - 15' DEPTH	MANHOLE - 30" DIA. - 15' DEPTH	30"	40	15-30	15'			ADJUST ARC AND RADIUS AS NEEDED
29	MANHOLE - 30" DIA. - 15' DEPTH	MANHOLE - 30" DIA. - 15' DEPTH	30"	40	15-30	15'			ADJUST ARC AND RADIUS AS NEEDED
30	MANHOLE - 30" DIA. - 15' DEPTH	MANHOLE - 30" DIA. - 15' DEPTH	30"	40	15-30	15'			ADJUST ARC AND RADIUS AS NEEDED



DOUGHERTY
Civil & Mechanical
1400 27th Street
Van Nuys, CA 91411
Tel: 818-708-1111
www.dougherty.com

THE CITY OF LOS ANGELES OR ANY OTHERS SHALL NOT BE RESPONSIBLE FOR THE ACCURACY OR COMPLETENESS OF ANY INFORMATION CONTAINED ON THIS PLAN.



THE CITY OF SAN PEDRO
 DEPARTMENT OF PUBLIC WORKS
 GENERAL MANAGER: MICHAEL SMITH
 ASSISTANT GENERAL MANAGER: [REDACTED]

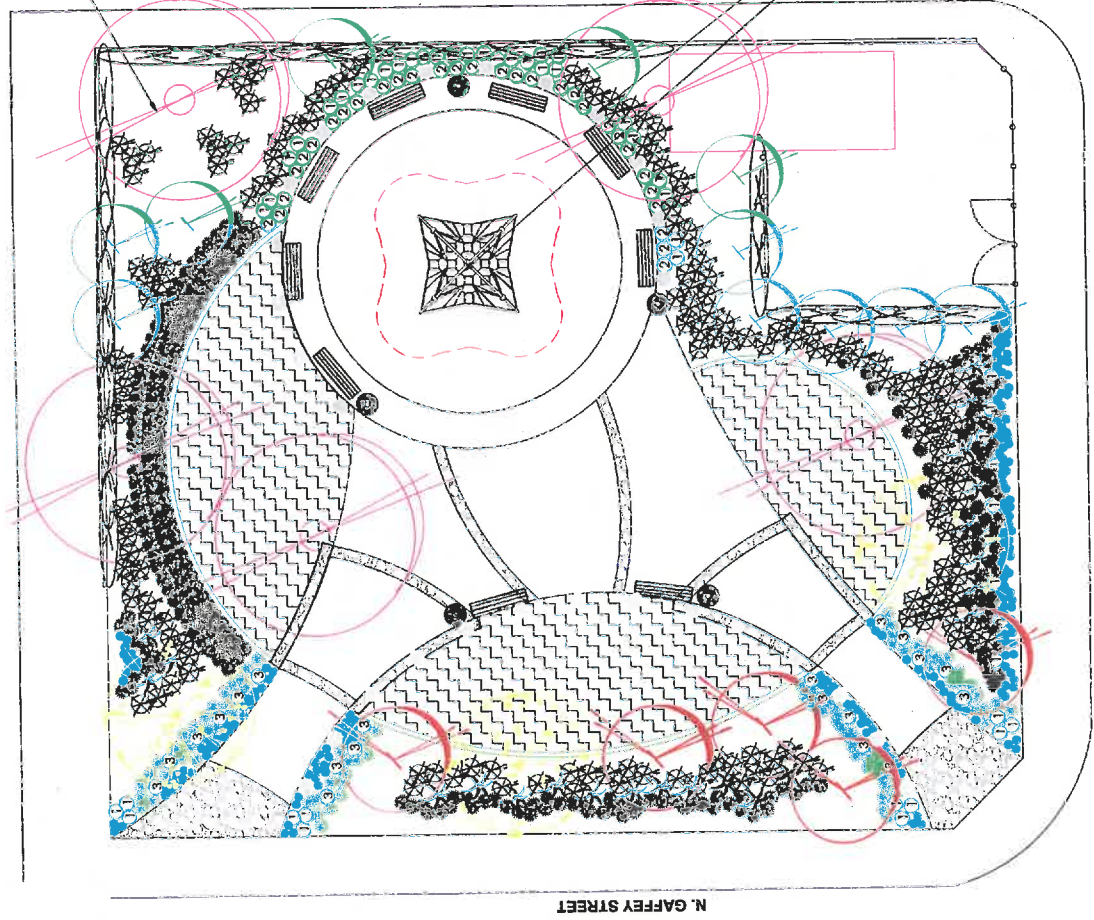


PROJECT NAME: **EXIT PARK**
 ADDRESS: **408 N. GAFFEY STREET**
 SAN PEDRO, CA

DATE: [REDACTED]
 PREPARED BY: [REDACTED]

PLANTING PLAN
 DRAWN BY: [REDACTED]
 CHECKED BY: [REDACTED]
 DATE: 12/22/15
 PROJECT NO: 15-1107
 SHEET NO: 15-1107-01
 TOTAL SHEETS: 02

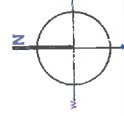
MEDIUM TO FINE TEXTURED SHREDDED BARK
 MULCH. MULCH TO BE 3" DEEP AND LEVEL WITH
 ADJACENT PAVING



PLANTING MATERIAL LEGEND:

SYMBOL	SYMBOL NAME	DESCRIPTION	PLANT	QUANTITY	SOURCE	REMARKS
1	PLANTING MATERIAL	MEDIUM TO FINE TEXTURED SHREDDED BARK MULCH		5	LANE MULCH PRODUCTS	
2	PLANTING MATERIAL	3" DEEP AND LEVEL WITH ADJACENT PAVING		15	LANE MULCH PRODUCTS	
3	PLANTING MATERIAL	ADJACENT PAVING		1	LANE MULCH PRODUCTS	
4	PLANTING MATERIAL	ADJACENT PAVING		1	LANE MULCH PRODUCTS	
5	PLANTING MATERIAL	ADJACENT PAVING		1	LANE MULCH PRODUCTS	
6	PLANTING MATERIAL	ADJACENT PAVING		1	LANE MULCH PRODUCTS	
7	PLANTING MATERIAL	ADJACENT PAVING		1	LANE MULCH PRODUCTS	
8	PLANTING MATERIAL	ADJACENT PAVING		1	LANE MULCH PRODUCTS	
9	PLANTING MATERIAL	ADJACENT PAVING		1	LANE MULCH PRODUCTS	
10	PLANTING MATERIAL	ADJACENT PAVING		1	LANE MULCH PRODUCTS	
11	PLANTING MATERIAL	ADJACENT PAVING		1	LANE MULCH PRODUCTS	
12	PLANTING MATERIAL	ADJACENT PAVING		1	LANE MULCH PRODUCTS	

FLAGPOLE
 PLAY PIECE WITH RESILIENT SURFACING



NOTES: VERIFY PLACEMENT AND PLANT QUALITY WITH LANDSCAPE ARCHITECT BEFORE PLANTING

PLAY OPTION 1



REVISIONS: [REDACTED]



THE CITY OF LOS ANGELES
DEPARTMENT OF RECREATION AND PARKS
GENERAL MANAGER MICHAEL BICKEL
ASSISTANT GENERAL MANAGER YAMONA MATHIAS
PROJECT ENGINEER
PROJECT NUMBER
DATE

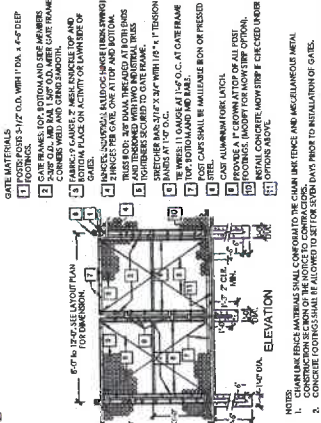


PROJECT NAME
EXIT PARK
408 N. GARFAY STREET
SAN PEDRO, CA

DATE	
REVISION	
DATE	
REVISION	
DATE	
REVISION	
DATE	
REVISION	

PLAN NAME
Construction Details
DRAWN BY
CHECKED BY
DATE
PROJECT NUMBER
LS-08

OPTIONAL OPTIONS CHECKED BOX ONLY
 SHALL BE AS SPECATED PERSON AND PAINTER FOR NOTICE TO CONTRACTORS TO MATCH FABRIC COLOR. THE
 ALL FRAMING SHALL HAVE A STANDARD GALVANIZED FINISH.
 INSTALL CONCRETE MOUNT STEP UNDER FENCE - SEE DETAIL.



NOTES:
 1. CONSTRUCTION IS TO BE IN ACCORDANCE WITH THE CITY OF LOS ANGELES SPECIFICATIONS FOR CHAIN LINK FENCE AND ACCESSORIES.
 2. CONCRETE FOOTING SHALL BE ALLOWED TO SET FOR STEEL AND PRIOR TO INSTALLATION OF GATE.

SIZE:
 6' X 10' 10" TRUCK
 HILL FINISH INDUSTRIAL ALUMINUM

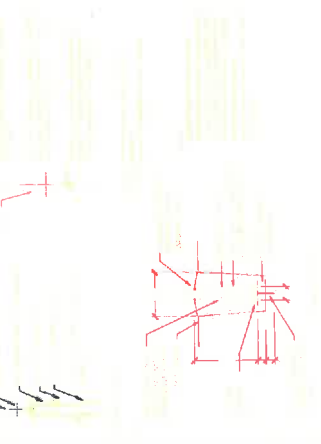
NOTES:
 1. INSTALL PERMANENT ANCHORS
 2. 6" X 6" SECTION TO INCLUDE
 3. 1" X 1" ALUMINUM STRIPS
 4. 1" X 1" SECTION TO INCLUDE 1" X 1" ALUMINUM STRIPS AND 1" X 1" ALUMINUM STRIPS
 5. CONCRETE - CUT BASE
 6. FORM & CONTIGUOUS CORNER



PERMALOC XL ALUMINUM 1 1/2" X 1 1/2" SQUARE SQUARE ADAPTER
 TOP OF EDGING TO BE MAXIMUM 1" ABOVE SURFACE MATERIAL
 CONTACT GRANITE ADJACENT TO SETTLING
 1 1/2" ALUMINUM INTO A.P. LOCK ADAPTER

MANUFACTURED BY PERMALOC CORPORATION
 10000 W. 10TH AVENUE
 WASHINGTON, WA 98078
 CONTRACTOR'S NOTE:
 FOR PRODUCT AND PURCHASING INFORMATION VISIT:
 WWW.PERMALOC.COM

D
 6' HIGH X 10' WIDE CHAIN LINK ACCESS GATES
 N.T.S.



A
 FLAGPOLE
 N.T.S.



C
 SIX FOOT CHAIN LINK FENCE
 N.T.S.



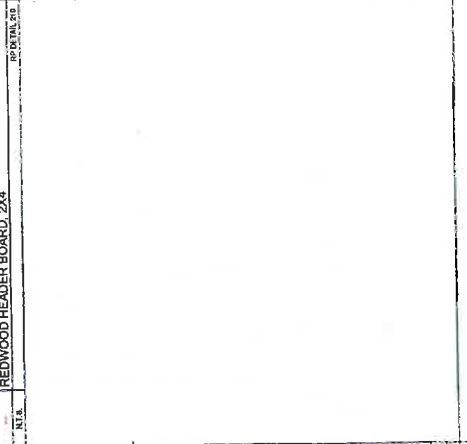
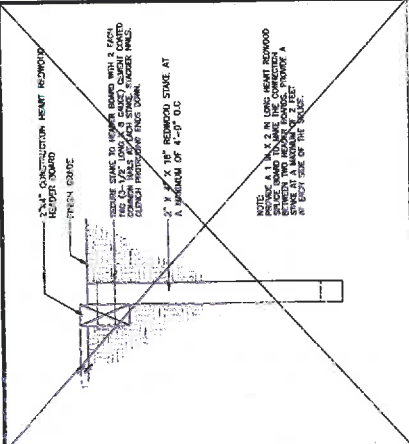
THE CITY OF LOS ANGELES
DEPARTMENT OF RECREATION AND PARKS
ASSISTANT MANAGER GENERAL SERVICES
PROJECT NUMBER: _____
SHEET NUMBER: _____
DATE: _____



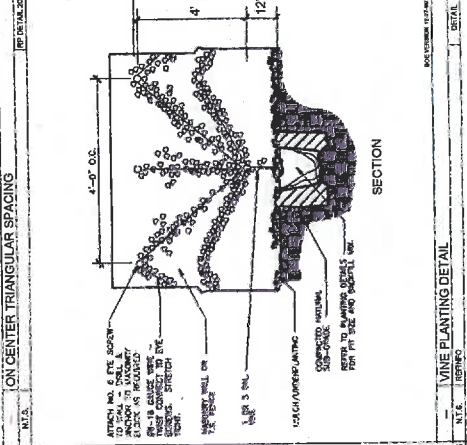
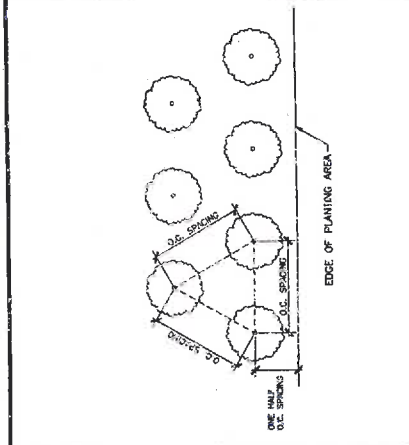
PROJECT NAME: **EXIT PARK**
ADDRESS: **406 N. GARFAY STREET**
CITY: **SAN PEDRO, CA**

PLANNING DETAILS

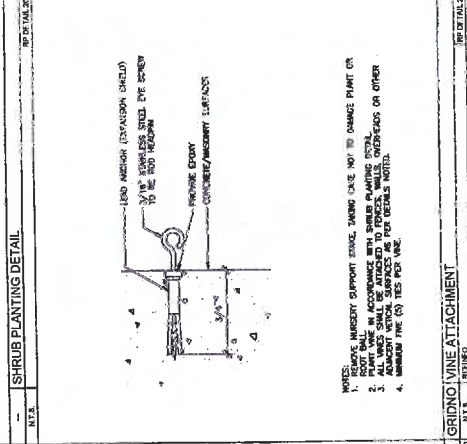
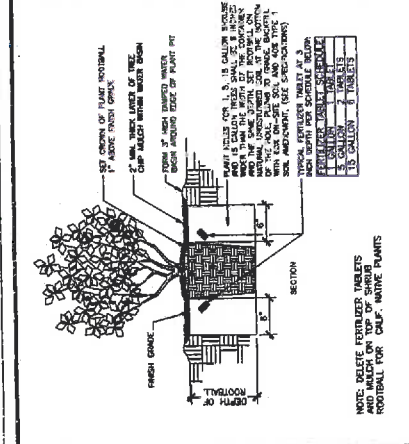
PLAN NUMBER: _____
DATE: _____
DRAWN BY: _____
CHECKED BY: _____
APPROVED BY: _____



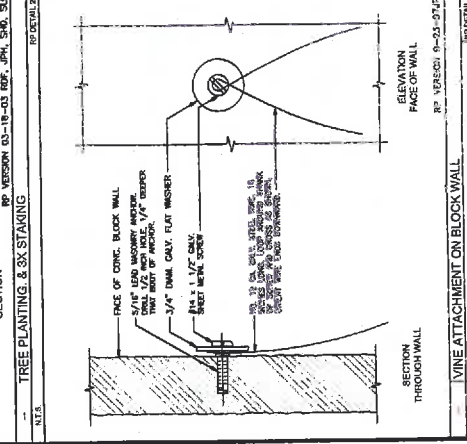
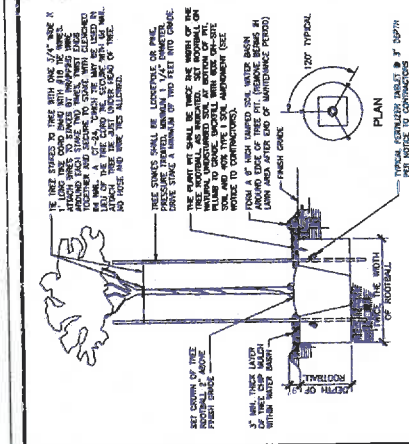
15. INSTRUCTIONS: CONTRACTOR SHALL VERIFY ALL MATERIALS AND METHODS OF CONSTRUCTION IN ACCORDANCE WITH THE CITY OF LOS ANGELES SPECIFICATIONS FOR PLANTING. THE CONTRACTOR SHALL VERIFY ALL MATERIALS AND METHODS OF CONSTRUCTION IN ACCORDANCE WITH THE CITY OF LOS ANGELES SPECIFICATIONS FOR PLANTING. THE CONTRACTOR SHALL VERIFY ALL MATERIALS AND METHODS OF CONSTRUCTION IN ACCORDANCE WITH THE CITY OF LOS ANGELES SPECIFICATIONS FOR PLANTING.



16. INSTRUCTIONS: CONTRACTOR SHALL VERIFY ALL MATERIALS AND METHODS OF CONSTRUCTION IN ACCORDANCE WITH THE CITY OF LOS ANGELES SPECIFICATIONS FOR PLANTING. THE CONTRACTOR SHALL VERIFY ALL MATERIALS AND METHODS OF CONSTRUCTION IN ACCORDANCE WITH THE CITY OF LOS ANGELES SPECIFICATIONS FOR PLANTING. THE CONTRACTOR SHALL VERIFY ALL MATERIALS AND METHODS OF CONSTRUCTION IN ACCORDANCE WITH THE CITY OF LOS ANGELES SPECIFICATIONS FOR PLANTING.



17. INSTRUCTIONS: CONTRACTOR SHALL VERIFY ALL MATERIALS AND METHODS OF CONSTRUCTION IN ACCORDANCE WITH THE CITY OF LOS ANGELES SPECIFICATIONS FOR PLANTING. THE CONTRACTOR SHALL VERIFY ALL MATERIALS AND METHODS OF CONSTRUCTION IN ACCORDANCE WITH THE CITY OF LOS ANGELES SPECIFICATIONS FOR PLANTING. THE CONTRACTOR SHALL VERIFY ALL MATERIALS AND METHODS OF CONSTRUCTION IN ACCORDANCE WITH THE CITY OF LOS ANGELES SPECIFICATIONS FOR PLANTING.



18. INSTRUCTIONS: CONTRACTOR SHALL VERIFY ALL MATERIALS AND METHODS OF CONSTRUCTION IN ACCORDANCE WITH THE CITY OF LOS ANGELES SPECIFICATIONS FOR PLANTING. THE CONTRACTOR SHALL VERIFY ALL MATERIALS AND METHODS OF CONSTRUCTION IN ACCORDANCE WITH THE CITY OF LOS ANGELES SPECIFICATIONS FOR PLANTING. THE CONTRACTOR SHALL VERIFY ALL MATERIALS AND METHODS OF CONSTRUCTION IN ACCORDANCE WITH THE CITY OF LOS ANGELES SPECIFICATIONS FOR PLANTING.